



ENVIRA-NORTH

SYSTEMS LIMITED

Transform Your
Building's Performance



VERSION 2



Circulate



Ventilate



Contain

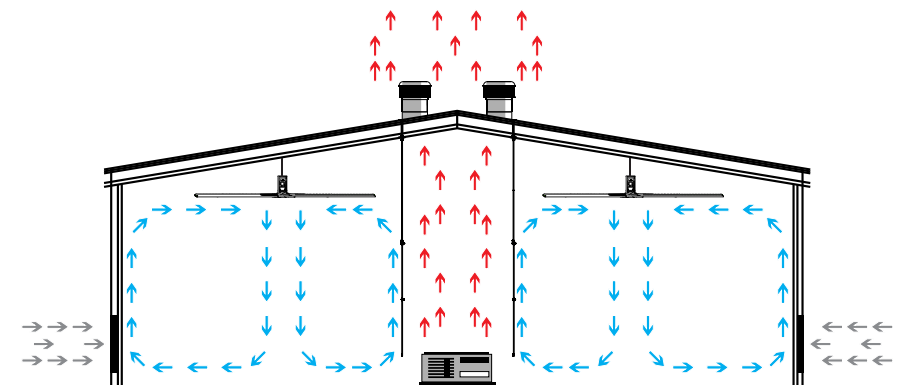
OUR SYSTEMS

Whether using natural ventilation or mechanical heating or cooling, Envira-North can help. Company leaders worldwide have integrated our products in their facilities to enhance comfort, improve safety, and increase productivity while reducing cost.

EXPERIENCED IN THESE APPLICATIONS

- *Agricultural*
- *Industrial*
- *Commercial*
- *Institutional*
- *Military*
- *Residential*
- *Recreational*

Custom designed for each application, we utilize our products as components to develop a system that not only provides a solution but maximizes saving potential to increase your return on investment.



Circulate = To make the space healthier & more comfortable

Ventilate = Naturally through roof

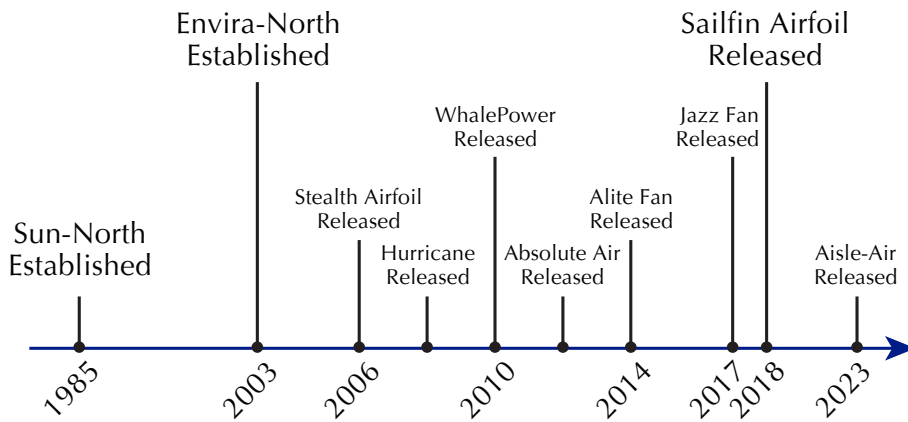
Contain = Hot, stale air

Tel: 1-519-527-2198
Fax: 1-519-527-2560
Toll Free: 1-866-771-7766

bigair@enviranorth.com

139 Sparling St.
P.O. Box 668
Seaforth, Ontario
Canada N0K 1W0

BUILT ON KNOWLEDGE



Envira-North Systems and our partners are here to help identify, define and tackle environmental challenges in your spaces.

"We take pride in our reputation & stand behind our products & services"

NOT JUST A MANUFACTURER....

We are air movement professionals with an established network of worldwide partners.



Jazz FANS

Sleek Design, Commercial Duty Air Movement

Distinctive Universal Mount

Hidden Safety Security System

Smart Voltage Onboard Controls

Pre-wired Connections for
Plug and Play Installation

Quiet Gearless Motor

High Performance
Stealth Blades

Seamless Dimmable
LED Light

STANDARD COLOUR FINISHES

The sleek, ultra-modern design allows for a magnitude of customizable finishes from vibrant red to brilliant chrome & every imaginable colour in between.



Wall Control



Radiance



Cobalt



Alabaster



Sterling



Slate



Onyx

DESIGNED FOR:

Commercial | Residential | Institutional

FREE COOLING

- Open air restaurant
- Dominican Republic
- Excessive heat
- Uncomfortable customers
- Two Jazz Fans installed
- Customers stay longer and consume more



ENERGY EFFICIENCY

- Expensive air conditioning
- One Jazz Fan speeds up air
- Decreases A/C load
- Increases comfort
- Provides quiet circulation and looks good too



INDUSTRIAL STRENGTH COMMERCIAL APPEAL

- Amusement park
- Montreal, Quebec
- Two Jazz Fans installed
- Patrons are comfortable waiting for rides

SPECIFICATIONS

- Maximum 7 to 10 ft (2 to 3 m) in diameter
- Gearless smart voltage motor
- Variable speed 0-120 RPM
- 45,000 CFM of air movement
- Upwards of 5 MPH breeze
- Crazy efficient - max 264 W
- Integrated dimmable LED light - 1980 Lumens
- On-board controls
- 85 lbs (38.5 kgs) assembled weight
- UL, CSA & CE certified
- Compact single box packaging
- Quieter than ambient noise



PACKAGING



One Box



Heavy Duty, Rigid and Durable For Maximum Air Movement

High Impact
Polystyrene Tips

Distinctive Universal Mount

Heavy Duty Mounting System

Gearless Direct Drive Nidec Motor

Up to 23° Angle of Attack

Thick Walled Powerful Airfoils

High Efficiency LED Light

Rigid Cast Alloy Aluminum Hub



Increased
Air Speeds



Reduced
Operating Costs



Decreased
Noise



Streamlined
Appearance

DESIGNED FOR:

Industrial | Agricultural | High Ceilings



AIR CONDITIONING

- 20,000 sq.ft in Toronto
- Rock climbing facility
- Uncomfortable climbers
- One 20 ft Sailfin Fan installed
- Reduced heating costs 10%
- Increased climber membership

SPECIFICATIONS

- 6 MPH breeze
- Maximum 5.7 A draw
- 264 CFM/Watt
- Minimal 2.5" blade flex
- 53 RPM at full speed
- Up to 23° angle of attack
- Less torque



OCCUPANT COMFORT

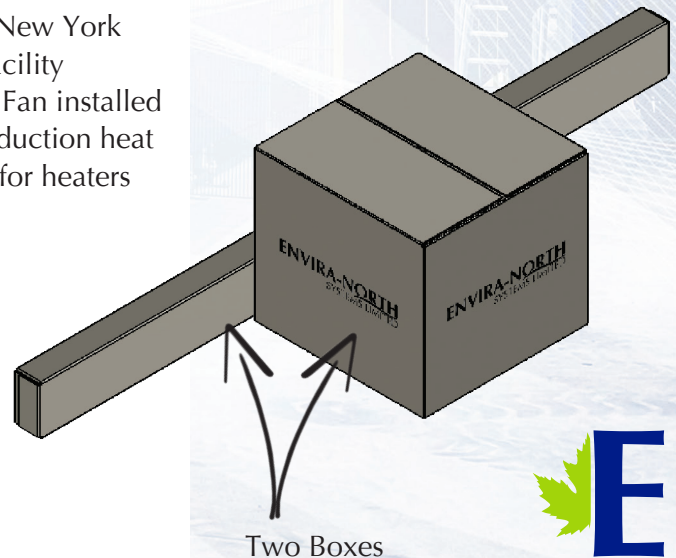
- Dairy barn in Canada
- Eight 24 ft Sailfins installed
- Keeps 200 cows cool
- Keeps milk production steady



DE-STRATIFICATION

- 50,000 sq. ft. in New York
- Manufacturing facility
- One 24 ft Sailfin Fan installed
- Recirculated production heat
- Eliminated need for heaters

PACKAGING



Heavy Duty, Rigid and Durable, For Maximum Air Movement

High Impact
Polystyrene Tips

Distinctive Universal Mount

Heavy Duty Mounting System

Robust Galvanized Fan Frame

Helical In-line Nord Gearmotor

Up to 23° Angle of Attack

Thick Walled Powerful Airfoils

Rigid Cast Alloy Aluminum Hub

SPECIFICATIONS

- 6 MPH breeze
- Maximum 5.7 Amp draw
- 264 CFM per Watt
- Minimal 2.5" blade flex
- 53 RPM at full speed
- Less torque from blade efficiency
- Up to 23° angle of attack



Reduced
Operating Costs



Increased
Air Speeds



DESIGNED FOR:

Industrial | Agricultural | High Ceilings



AIR CONDITIONING

- 27,000 sq.ft in Dubai
- Expensive air conditioning
- One 24 ft Sailfin Fan installed
- Increased set point 2°C
- Saved 34% or \$14,708 USD over 6 months

OCCUPANT COMFORT

- Dairy barn in USA
- One 24 ft Sailfin Fan installed
- Keeps 50 cows cool
- Keeps milk production steady



DE-STRATIFICATION

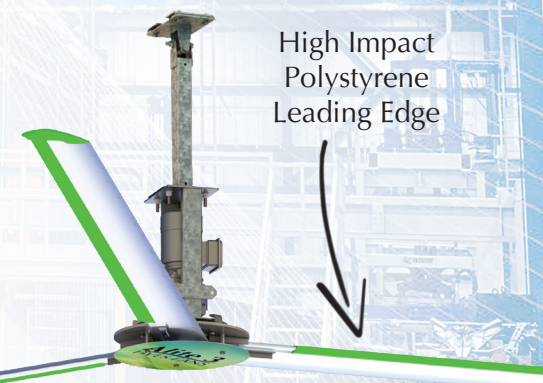
- 100,000 sq.ft in Toronto
- Expensive to heat
- Five 20 ft Sailfin Fans installed
- Reduced temperature differential
- Saved 30% or \$12,343 over 6 months

Alite 3

HVLS FANS

LIGHT DUTY, LOW COST AIR MOVEMENT

- Up to 4.5 MPH breeze
- Cost effective alternative
- Nominal power consumption
- Inexpensive operation
- Quiet performance
- Minimal maintenance
- Lightweight
- 18° angle of attack
- 285 CFM per Watt



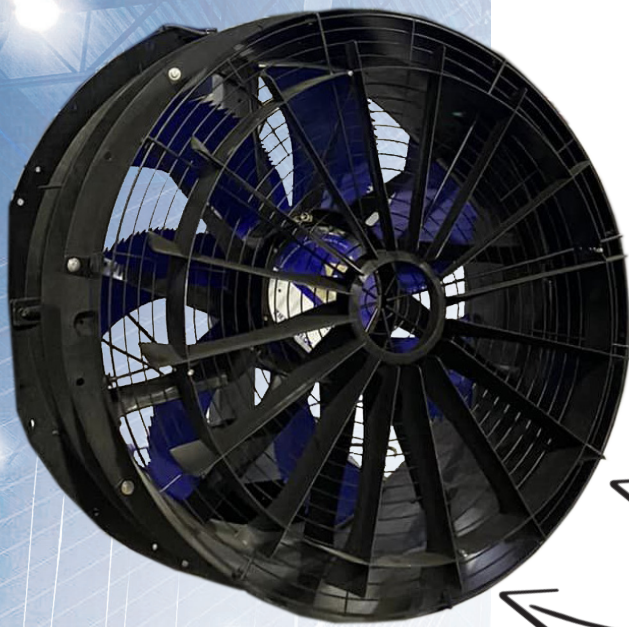
Aisle-Air

FANS

DESIGNED FOR:

Industrial | Agricultural | High Ceilings

Heavy Duty, High Speed
Focused Air Movement



Optional OSHA Compliant Guard

Velocity Booster

Corrosion Resistant Fibreglass Housing

Post or Ceiling Mount Options

SPECIFICATIONS

- Up to 15 MPH air speeds
- Covers Aisles up to 80' Long
- 200-240v input, 2 amps
- 1600 RPM
- IP55, Integrated controls –
- MODBUS signal
- Maintenance Free

This fan creates a focused air flow of extreme velocity that helps cool occupants in a facility. It also controls insects, keeps floors dry and eliminates temperature differential in tight spaces (such as racking).

The minimal foot print enables the Aisle-Air to be utilized in environments where space is at a premium. Flexible mounting options allows the fan to be mounted directly on the racking, structural posts or from the ceiling.



Increased
Air Speeds



Quick
Installation



Concentrated
Breeze



Minimal
Maintenance

DESIGNED FOR:

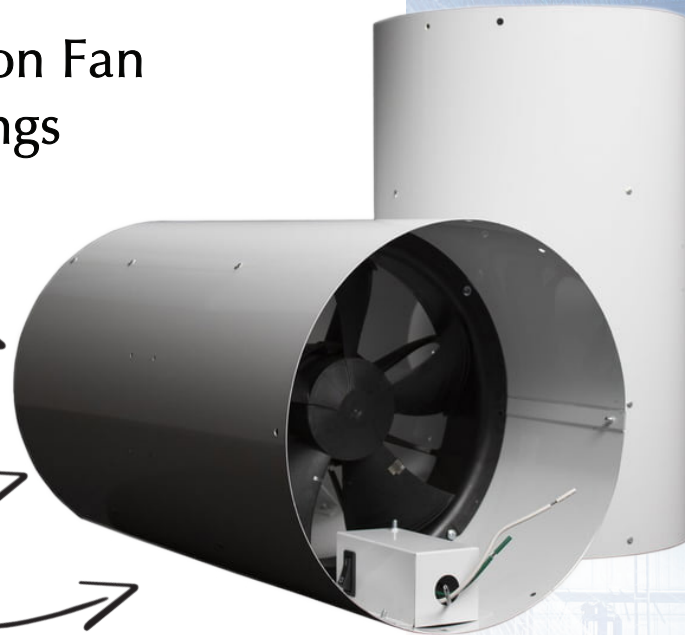
Commercial | Residential | Institutional

Axial Destratification Fan For Open Ceilings

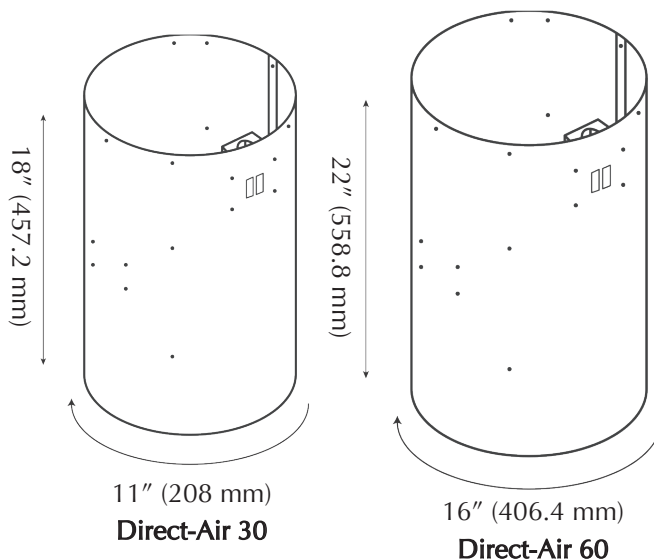
Unique Round Design

High Quality .040
Kynar Aluminum

Cross Shaped Vanes For
Proper Air Distribution



Direct-Air 30 & Direct-Air 60 Fans are powerful axial destratification fans for open ceilings. These fans come in 2 sizes and are designed to eliminate stratified air layers from ceiling to floor and help deliver 30% energy savings for high-elevation ceilings in commercial and industrial buildings.



SPECIFICATIONS

- Available in two sizes (18" & 22")
- Direct-Air 30 max. height 30 ft
- Direct-Air 30 1,200 sq.ft coverage
- Direct-Air 60 max. height 60 ft
- Direct-Air 30 2,000 sq.ft coverage
- High efficient ECM (Electronically Commutated Motor)
- Soft start feature
- Can be controlled digitally with TouchAIR or analog with LVC (low voltage control)
- Standard white colour - custom colours are available



Allure 72



Universal
Mount

Light Commercial & Residential Air Movement

Advanced Aerodynamic Blades

Brushless DC Motor

20 W Integrated
Dimmable LED Light

ALLURE 72 & ALLURE 60

Allure 72 fans have 5 blades, is 72" diameter and comes in your choice of white or black. Also available is the Allure 60 which is 60" diameter. Fans include a dimmable light and easy to use remote control.

These ceiling fans can be installed in many different spaces, such as living rooms, dining rooms, bedrooms, and wet locations such as a patio or lanai. Light commercial applications include restaurants, offices, hotels, and resorts.

Allure 60

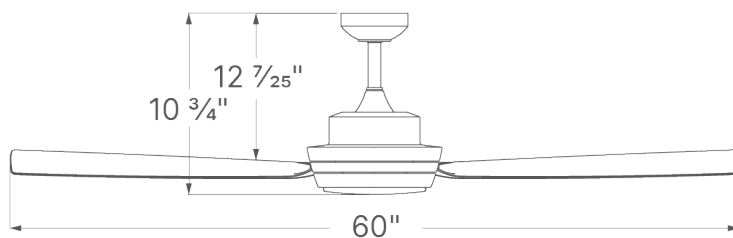
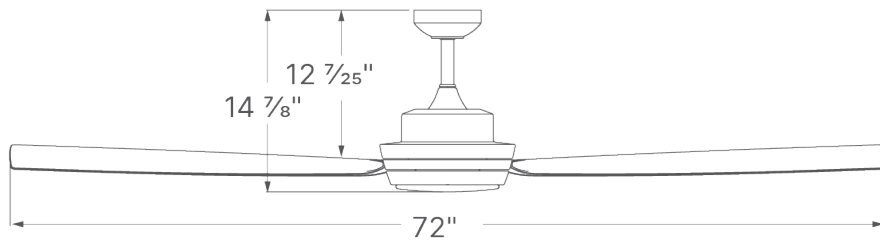


DESIGNED FOR:

Commercial | Residential | Institutional

ENERGY EFFICIENT

- Good for whole room circulation
- 4% to 8% energy savings while operating ceiling fan with air conditioning with ceiling fan
- Smooth start
- Quiet operation



SPECIFICATIONS

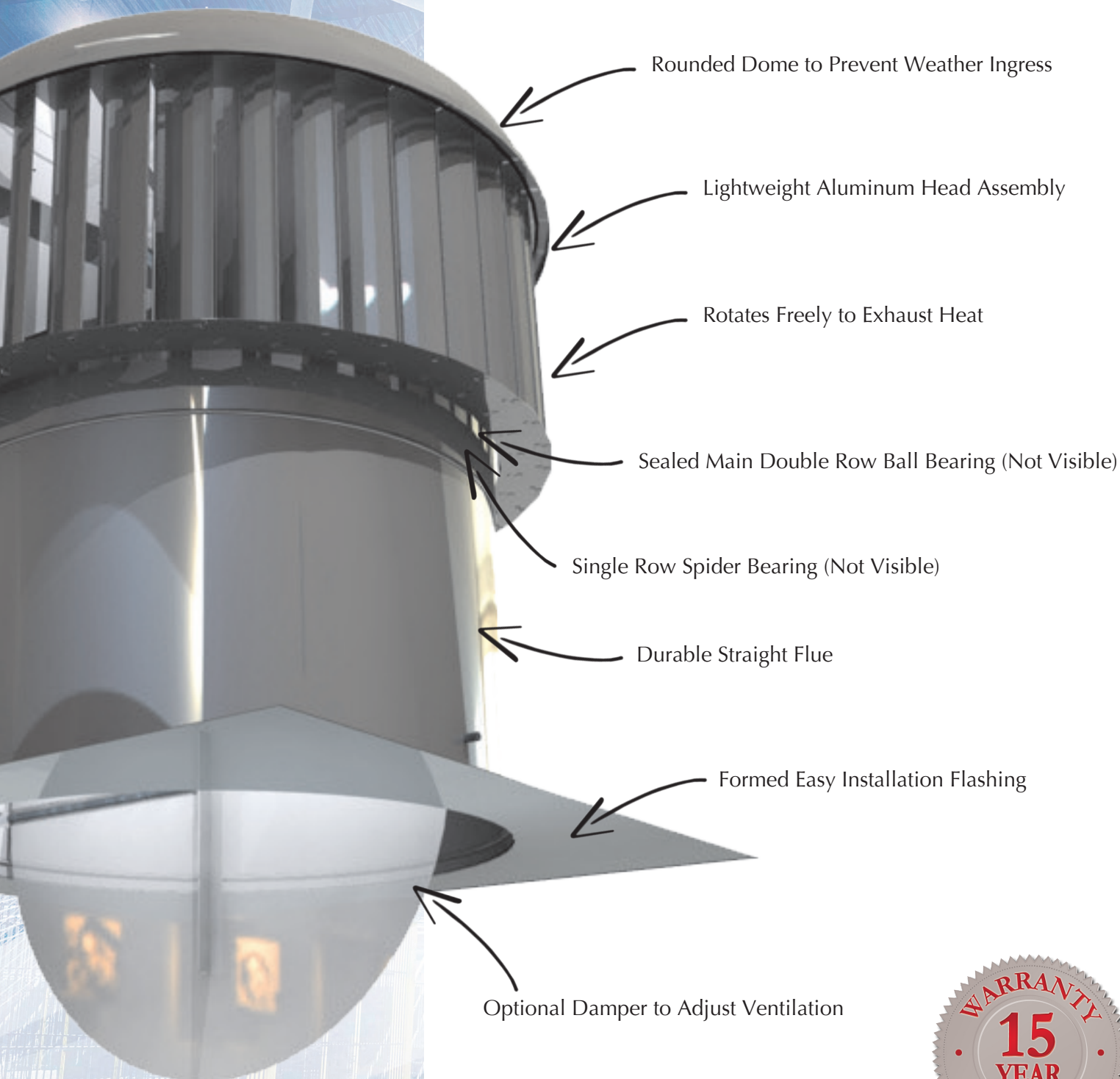
- Available in 72" or 60" diameters
- Brushless DC motor
- 7900 CFM airflow (72" model) / 6400 CFM (60" model)
- 25 W power consumption (72" model) / 20 W (60" model)
- 6 fan speeds
- Dimmable light
- Indoor/outdoor use
- Wet location rated
- Remote controlled



Remote Controlled



Industrial Quality, Whisper Quiet Passive Ventilator



Not Shown: Vari-pitch flue for
pitched roof installations



DESIGNED FOR:

Industrial | Commercial | Institutional

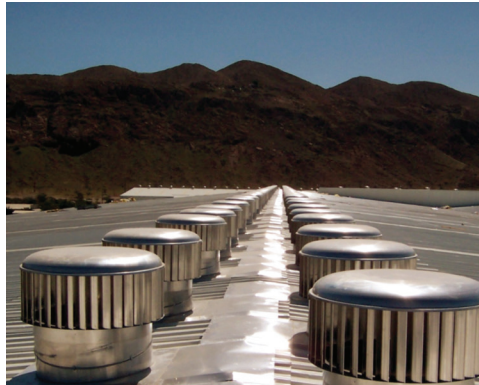


WAREHOUSE HEAT RELIEF

- Industrial storage on Great Lakes
- 25 Hurricanes vent hot air
- Keeps facility cool
- No power required
- Open in spring, close in fall

MANUFACTURING COOLING

- Manufacturer in Arizona
- Using ceiling fans to cool, wasn't working
- Installed Hurricanes down peak
- Lowered ambient temperature
- Ceiling fans became effective



ECOPOWER APPLICATION

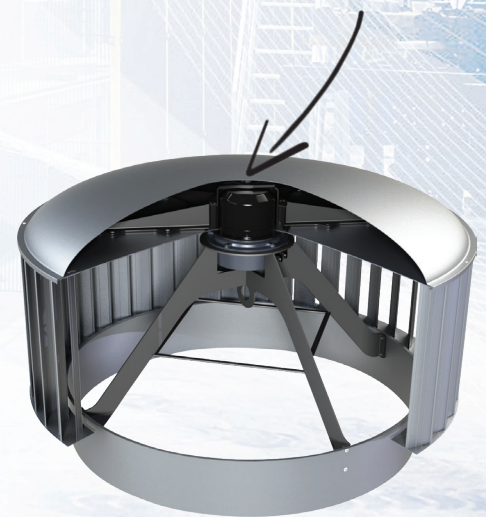
- Apartment building in Montreal
- 73 Ecopower units installed
- Hybrid ventilation shafts
- Minimal noise
- Efficient from the start
- Helped qualify for Green Building Certification

Ecopower® TURBINES

GUARANTEED EXHAUST RATES

- Utilizes brilliant Hurricane design with added EC motor
- Extremely efficient
- Dependable ventilation
- Free spinning under wind load
- Lightweight & quiet
- Outperforms competitors
- Unique hybrid ventilators
- Compatible with most BMS systems
- Minimal maintenance

Hidden EC Motor



Industrial CURTAINS

Flexible, Heavy-Duty, Containment & Separation Partitions

Stainless Steel
Suspension Cables

Heavy Duty Rigid Pick-Up Tabs

Manual/Automatic Opening
and Closing Options

Durable Fabric Options For a
Variety of Applications

Rolls Up for Storage

100% Custom Manufactured
for Each Space

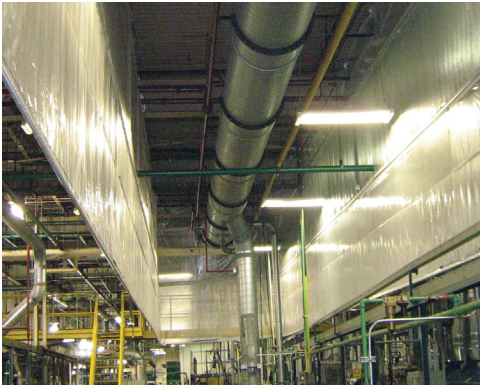
Aluminum Lightweight Keder Pipe

Floor Sealing Flap

Not Shown: Optional door &
window openings

DESIGNED FOR:

Industrial | Commercial | Agricultural



PRODUCTION HEAT CONTAINMENT

- Manufacturer in Toronto
- Production heat migrated throughout facility
- Installed curtain to contain
- Exhausted only hot air
- Significantly reduced building temperature

WAREHOUSE SEPARATION

- Distribution centre in Montreal
- Trying to separate leased space
- Installed Industrial Curtain
- Created a physically separated space

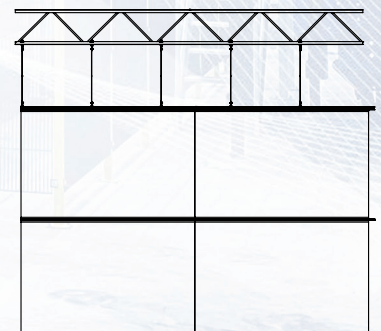


MAINTAINING FLEXIBILITY

- Expanding manufacturer in Detroit
- Needed to section space
- Installed curtain to divide but not permanently separate
- Light penetrating material ensured no other adjustments necessary

CURTAIN OPTIONS

- Automated or manual devices available for opening/closing
- All our curtains are custom made to your specifications
- Stainless steel cable is used for all main pull lines and curtain drop lines
- A heavy grade galvanized top and bottom curtain rod
- Multiple operating curtains with a central mounted tubular actuator for compact roll-up storage
- Available in a large selection of materials such as heavy duty, fire rated, breathable, shade cloth or insect screen



Controls

FAN CONTROL OPTIONS

SmartAIR FAN CONTROL

- Designed for use with a single fan
- Multi-Fan Option controls up to 10 fans
- Touchscreen controlled
- Pulls power from VFD (no separate power source)
- Designed to work in conjunction with; Schneider VFD's, ModAIR Fan Controls or a mixture of both options
- Jazz Fans must be on their own network



TouchAIR FAN CONTROL

- Designed for use with up to 20 fans
- Touchscreen controlled
- NEMA4X Enclosure
- Ideal component to use with BAS
- Designed to work in conjunction with; Schneider VFD's, ModAIR Fan Controls or Jazz Fans



CONTROL FEATURES

- User friendly control options
- Local or remote control
- UL, cUL and/or CE approved on most controllers
- Wide range of input voltages
- Single fan or multiple fan controllers available

EchoAIR FAN CONTROL

- Completely wireless connection
- Independent Wi-Fi connection
- Pre-programmed "Plug and Play"
- Exclusive Envira-North capability
- Use where cables are not feasible
- Ability to connect through walls
- One enclosure beside control of choice and one connected to drive at fan



LOW VOLTAGE CONTROL (LVC)

- Uses a 0-10 signal
- Controls up to 7 fans (700' of wire)
- Uses 7-wire daisy-chained from VFD to VFD
- Can be used with Lenze & Schneider VFD's



TEMPERATURE CONTROL (TFD-1)

- Works in conjunction with the LVC
- Uses a modulation-band to automate fan speed
- Fans turn on a minimum temperature set point



WIND SENSOR

- Works in conjunction with the LVC
- Uses a modulation-band to automate fan speed
- Fans turn on a minimum temperature set point



VFD OPTIONS



SCHNEIDER VARIABLE FREQUENCY DRIVE (VFD)

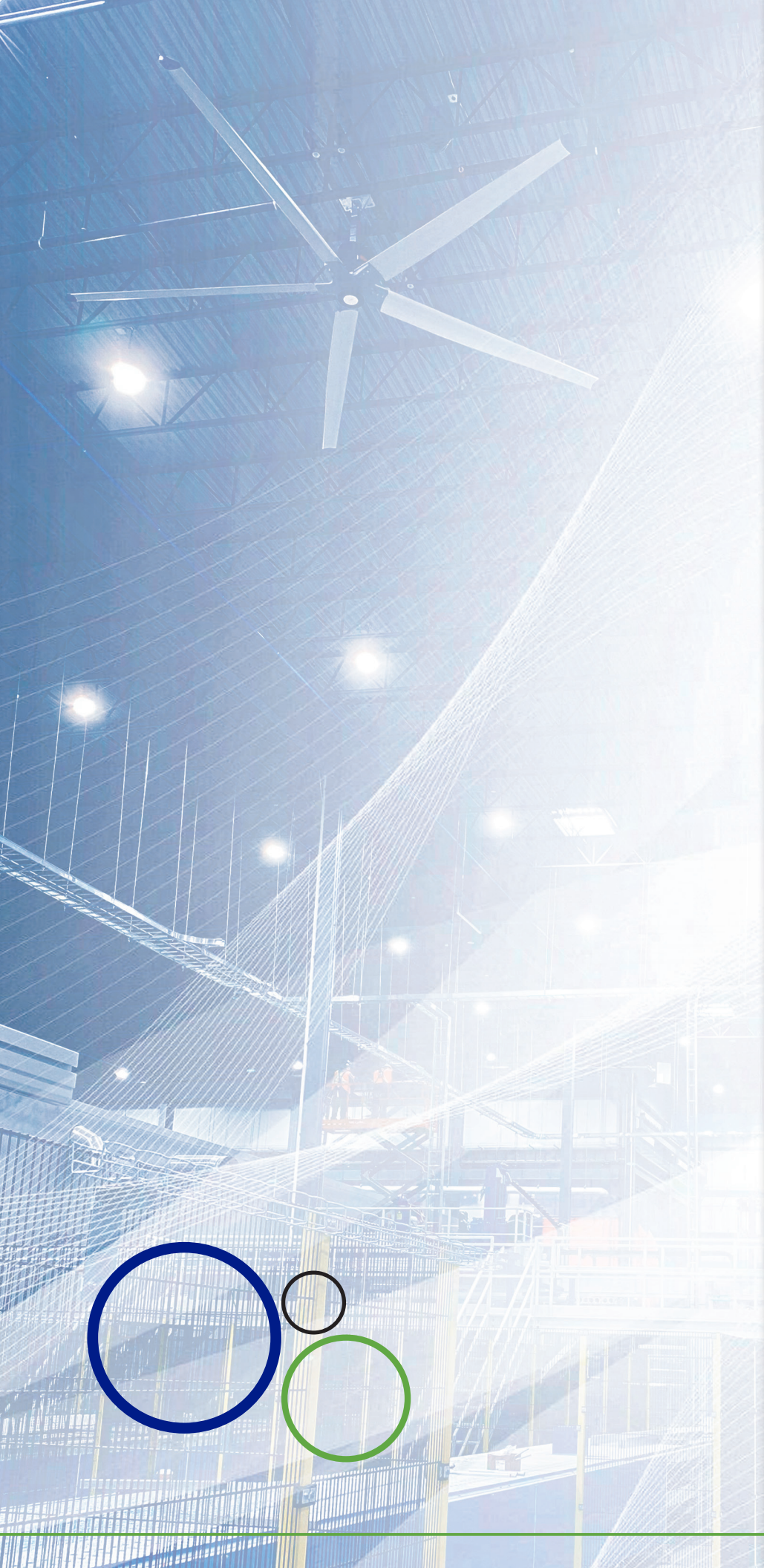
- Requires one for every fan
- Available in 200-240v / 380-500v / 525-600v
- Accepts Single Phase power
- Only use two phases of 3ph power from source
- NEMA4X Enclosure
- For use with standard Gearless or Gearmotor Fans
- Optional internal fire relay



FlexAIR FAN CONTROL

- Operable from face of control
- NEMA4X/IP66 Enclosure
- Modbus RTU communication
- Onboard LCD screen
- Compact size





Tel: 1-519-527-2198
Fax: 1-519-527-2560
Toll Free: 1-866-771-7766

bigair@enviranorth.com

139 Sparling St.
P.O Box 668
Seaforth, Ontario
Canada N0K 1W0



ENVIRANORTH.COM